

Welcome to
Sydney East



YOUR ASIA-PACIFIC HUB

Our Sydney East data centre provides best in class critical infrastructure services, to some of the world's largest organisations, significant Australian companies and government agencies for whom data centre resilience is critical.

Welcome to our world class Sydney East data centre.

Australia is a highly developed country and an extremely attractive location, not only because of the size of its economy but also because of the geo-political benefits it offers multi-national companies. Australia has a stable government and Sydney is not subject to seismic disturbance. With Asia-Pacific becoming the centre of global growth, Australia is in a unique position as a safe and reliable location from which to service the region's growing economies. By understanding

our customers' business needs and data centre requirements, Sydney East has been designed for maximum security and resiliency.

Sydney East has best in class operational and environmental management processes and operates to Tier III plus standards.

The data centre benefits from diverse power from two separate incoming supplies, offering high density solutions as standard and with flexibility to meet a range of requirements.



A WORLD-CLASS
DATA CENTRE



OPERATIONAL
EXCELLENCE



NETWORK
DENSE



CLOUD
CONNECTIVITY



CARRIER
NEUTRAL



BESPOKE
SOLUTIONS

A SECURE AND CONNECTED LOCATION

Strategically located West of the central business district, Sydney East acts as the territory's hub with unparalleled access to power and connectivity.

Sydney is the largest city in Australia and home to the majority of the country's leading companies and financial institutions as well as being the regional headquarters for numerous multinational corporations. Sydney's location also enables convenient travel to other key growth centres throughout the Asia-Pacific region.

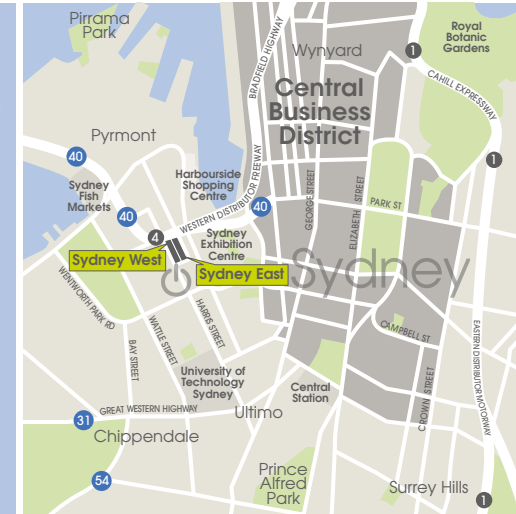
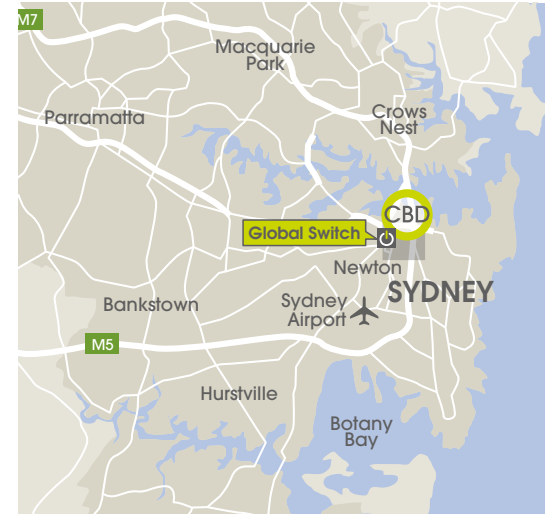
Sydney East is located adjacent to Global Switch's Sydney West data centre. The campus is

easily accessed by multiple transport modes including car, light rail, train and is only 15 minutes from Sydney International airport.

Located on the major trunk routes for Tier 1 and Tier 2 international and local carriers and ISPs, the data centre is served by multiple exchanges on diverse routes.

Key Location Features

- The data centre is located on the edge of the Sydney Central Business District (CBD) and city centre
- Served by multiple telecommunication exchanges and a dense carrier presence providing exceptional connectivity
- Low latency
- Exhibition Centre Light Rail Station is located within a 5 minute walk
- Central Station is 2km away
- Kingsford Smith International Airport is 10km away





A NEXT GENERATION DATA CENTRE

Key Features

- 31,000 sq m with 45MVA utility power supply capacity
- High density as standard with flexibility to meet a range of requirements
- Scalable approach: design can be tailored to suit customer needs
- Very large and flexible floorplate
- Target PUE of 1.35
- Carrier Neutral with access to multiple Tier 1 and Tier 2 international carrier networks
- Dedicated security infrastructure systems, with HD video surveillance system and biometric entry controls
- Low risk operational environment
- Cost effective solutions

As a data centre owner and operator, reputation is everything. Our ongoing commitment to respond to our customers changing needs is vital.

Our operational environment enables customers to reduce their carbon footprint and drive greater efficiency from their operations. This reduces total cost of occupancy and minimises operational risk. This is why some of the world's largest companies and organisations have chosen Sydney West to house their mission-critical IT infrastructure and have committed to occupy or grow into Sydney East. Global Switch data centres operate to Tier III plus standards and Sydney East is no exception. As a company we are committed to ISO 9001, ISO 14001, ISO 27001, ISO 45001 and ISO 50001.

Sydney East is a leading example of an environmentally sustainable data centre with all three stages either having received or targeting a Leadership in Energy and Environmental Design (LEED) Gold Rating.

- Reconfigurable power and cooling distribution
- Variable speed fans and free air cooling systems
- Low energy CRAH units
- Facilities to harvest rainwater and to recycle water for use in the cooling systems





CARRIER NEUTRAL

Our carrier neutral stance allows for greater choice in a competitive environment.



MULTIPLE PEERING

Multiple peering exchanges and carrier networks results in direct connections and business continuity.



NETWORK DENSE

Strategically situated providing access to the main submarine cable networks.



LOW LATENCY

Location allows low latency connectivity to Sydney's Central Business District.

OUTSTANDING CONNECTIVITY

Our carrier neutral stance gives you greater choice in a competitive environment. The ability to connect into multiple peering exchanges and carrier networks results in direct connections and lower latency.

Global Switch data centres are located in key connectivity hubs in close proximity to international fibre routes. Access to multiple ISPs, Tier 1 and Tier 2 carriers is essential to business continuity and increasing network reach.

Sydney East benefits from the rich connectivity Sydney West provides having a multitude of international and local Tier 1 and Tier 2 carriers present providing access to the main submarine cable networks.

At Global Switch you are able to establish direct connections to a vast portfolio of service

providers giving you the flexibility to diversify your network and connect your data centres as your business needs evolve.

Global Switch Sydney East offers four diverse entry points as well as two dedicated Meet Me Rooms. In addition, the data centre benefits from diverse cable pathways between the Meet Me Rooms in Sydney West.

Connect to Asia-Pacific and the rest of the World through Australia's expanding submarine cable network.

Key Features

- Six available Meet Me Rooms providing diversity and connection options
- Structured cabling system linking Sydney East to Sydney West
- Benefit from the substantial carrier presence in Sydney West
- Telecommunications resilience through multiple exchanges
- Location allows low latency connectivity to the CBD and greater Sydney

CUTTING-EDGE OPERATIONS

Our unrivalled experience and expertise give our customers the confidence that we will deliver from initial consultation, through build and fit out phases, to continued technical support.

Exceeding customer expectations is at the heart of our business.

Our team shares their knowledge to ensure we are at the cutting edge of data centre management and service provision.

We have worked with some of the world's largest companies to deliver data centre solutions to match their specific requirements for the short, medium and long term challenges they may face.

Being able to offer robust and scalable solutions in terms of space, power and cooling has been the driver for many businesses that choose Global Switch as their data centre provider.

Our team has unrivalled expertise in all facets of the operational environment. These individuals are on hand to work with all customers to ensure

that their individual business needs and specifications are met. In addition, we have sourced only the most talented and experienced experts and suppliers who have designed, built and now maintain our Sydney East data centre.

Global Switch operates a centrally run Critical Environments Programme with dedicated teams within the campus. These teams drive a common set of "best practice" standards, systems, processes and procedures. Not only does this mean the data centre environment is operating at its most efficient levels, it gives customers a clear expectation of how their data centre will be maintained across the Global Switch Sydney Campus.





We understand our customers' requirements and challenges. We offer unrivalled expertise, flexibility and scalability to meet those challenges.

Our Sydney East data centre solutions include:

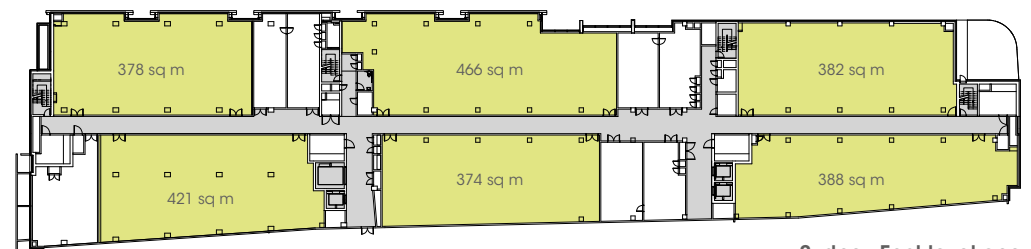
Private Suites A rapidly growing number of businesses are now enjoying the benefits of outsourcing their IT infrastructure and mission critical systems into Global Switch Private Suites. These self contained areas, which can include 24x7x365 network operating centre facilities, are designed and built to customers' bespoke specifications.

Cages Global Switch Cages offer the benefits of large scale resilience for medium sized IT space requirements. This solution provides secure private areas for customers and offers flexibility in design and layout.

Meet Me Rooms Our carrier neutral status ensures that carriers and ISPs are able to establish Points of Presence throughout our data centres. Our diversely routed Meet Me

Rooms ensure that customers can connect directly to all major global and national carriers and telecommunication service providers.

Our Sydney East data centre provides a range of additional services from tailored private offices and meeting rooms, to technical cleaning, cable management and secure storage.



Sydney East level one

■ Customer Space
(Indicative suite areas)



TECHNICAL SPECIFICATION

Main Structural Features

- Reinforced post tensioned concrete construction floors and columns, concrete walls with aluminium cladding and glazing
- 5.2m slab to slab height
- Raised floor height of 1,000mm
- Minimum from raised floor: 3.2m clear height to underside of ceiling
- Minimum floor loading of 15kN/m²
- 1 goods lift (11 tonnes), 1 passenger lift

Power

- 33kV utility supply with N+1 redundancy
- Utility power supply capacity of 45MVA (current and planned)
- Technical (IT) and mechanical power supplied by on-site diesel rotary type UPS with N+2 redundancy
- Fully diverse power distribution to technical areas
- On-site diesel tanks to support 24 hours at full capacity with 24x7x365 fuel delivery
- Offering 1,850 W/m² as standard, with higher density solutions fully supported

Cooling

- 35.4 MW of total cooling provision
- Minimum N+1 resilience on all systems
- CRAH units control temperature and humidity in technical space within the recommended range of ASHRAE TC9.9
- Diverse distribution pipework throughout
- Chilled water cooling system with free cooling loop
- In rack cooling capability if required

Security

- Operations Centre manned 24x7x365
- Security guard patrols 24x7x365
- Continuous CCTV surveillance of external and internal areas
- CCTV records kept for 31 days
- Comprehensive intruder detection and alarms to all areas
- Strict access control procedures to ISO 27001
- Access control using proximity card readers and biometric systems
- Physical access via mantrap
- Secure managed delivery and loading area available 24x7x365
- Secure staging available, if required

Connectivity

- Carrier Neutral
- Network dense with access to multiple global and regional carriers and Internet service providers offering Dark Fibre, Wavelength, Ethernet, MPLS, VPLS, IP Transit, Peering, CDN, Storage, Virtualised Services (SDN), Voice, Mobile Services
- Access to multiple cloud services through leading public, private and hybrid cloud solution providers
- 4 dedicated Meet Me Rooms
- 3 diverse building entry points
- Diverse cable routes and pathways
- Campus fibre system interconnecting Sydney East to Sydney West
- Roof space availability for satellite and antennae equipment
- PipelX, MegalX and IX Australia present

Fire Detection and Suppression

- Analogue addressable fire detection system in all areas
- Aspirated early warning smoke detection system (monitored 24x7x365)
- Inergen gas suppression system in technical areas with pre-action sprinkler for additional resiliency

Management Systems

- Experienced 24x7x365 facilities management team
- Environment (thermal conditions) monitored 24x7x365
- All Building Management Systems (BMS) monitored 24x7x365
- Comprehensive energy metering systems
- Internationally recognised critical environments specialists

Other Services

- Cross connects
- Customer reports
- Deliveries and storage
- Design and build
- Fit out
- On-site facilities
- Remote hands
- Technical cleaning and waste disposal

Certifications

- ISO 9001, ISO 14001, ISO 27001, ISO 45001 and ISO 50001

Technical specification relates to the final fit out of all stages of Sydney East.

Leading the way for the data centre industry, Global Switch is the only choice for resilience, innovation, scalability and agility.

We look forward to welcoming you to our world-class Sydney East Data Centre and becoming your data centre partner.

Global Switch Sydney

400 Harris St, Ultimo NSW 2007, Australia
+61 (0)2 9566 7000
salessydney@globalswitch.com

The information provided in this brochure is intended to be used for illustrative purposes only and does not constitute part of any offer or offer to contract. This brochure is given with no knowledge of your needs or requirements, and any information herein contained is not warranted as accurate or complete. Global Switch Property (Australia) Pty Limited accept no liability arising due to your reliance upon the contents of this brochure. © Global Switch 2022



CONTACTS

Corporate Office

+61 (0) 2 9566 7000

infosydney@globalswitch.com

DATA CENTRES

Global Switch Sydney

+61 (0) 2 9566 7000

salesydney@globalswitch.com